



new 2018

Px400



The new REMA Px400 circular saw with robust construction and reinforced components will cut through both solid wood and wood-based panels.



The solid guide rollers of rip fence and cross cut fence ensure proper positioning of the material and trouble-free operation.

Px400

The REMA Px400 is a professional machine for universal purposes. Equipped with a powerful cutting unit with a 6kW S1 motor and a separate scoring unit, it is a universal alternative for sliding table panel saws.

The machine enables working with a maximum saw diameter of 400 mm. The Polish construction based on European components is a guarantee of durability for years.

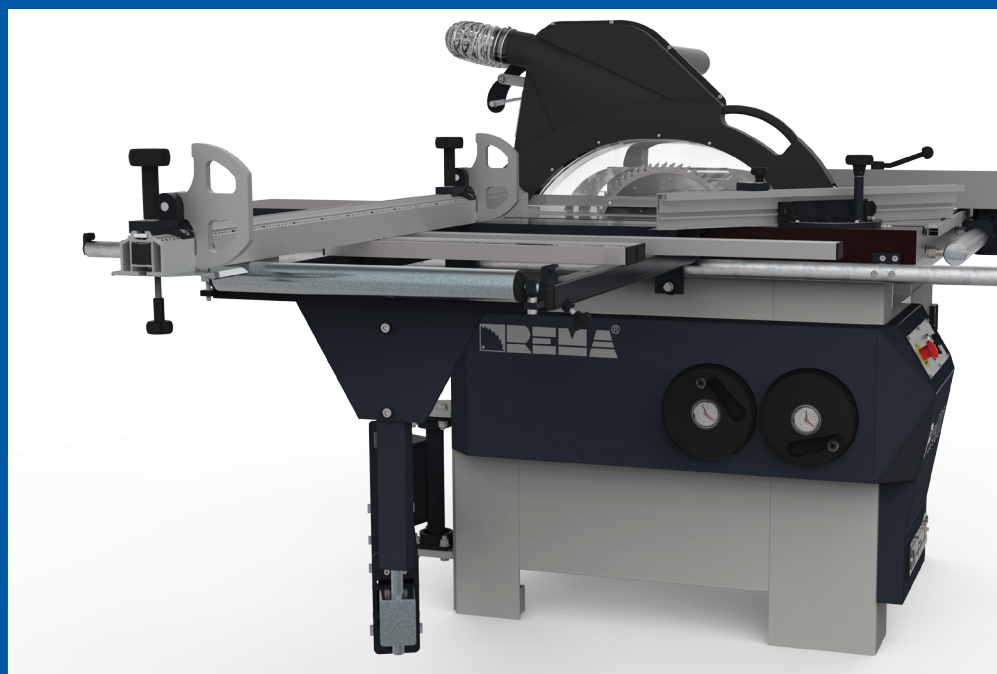


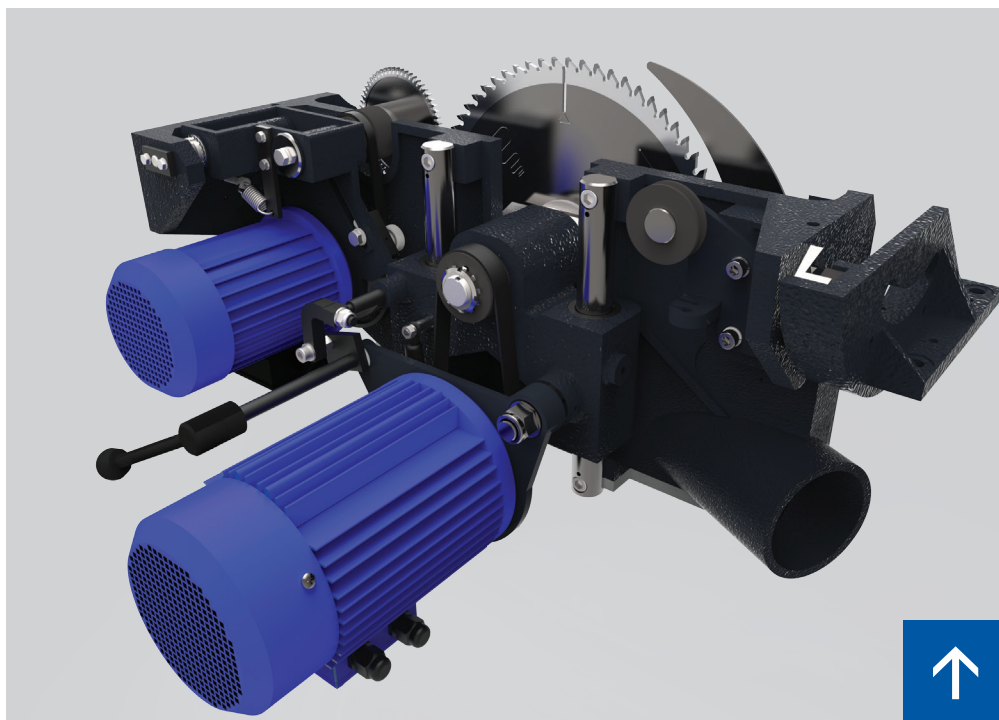


Effective dust extraction thanks to a full-size top guard with a material-height adjustment system.



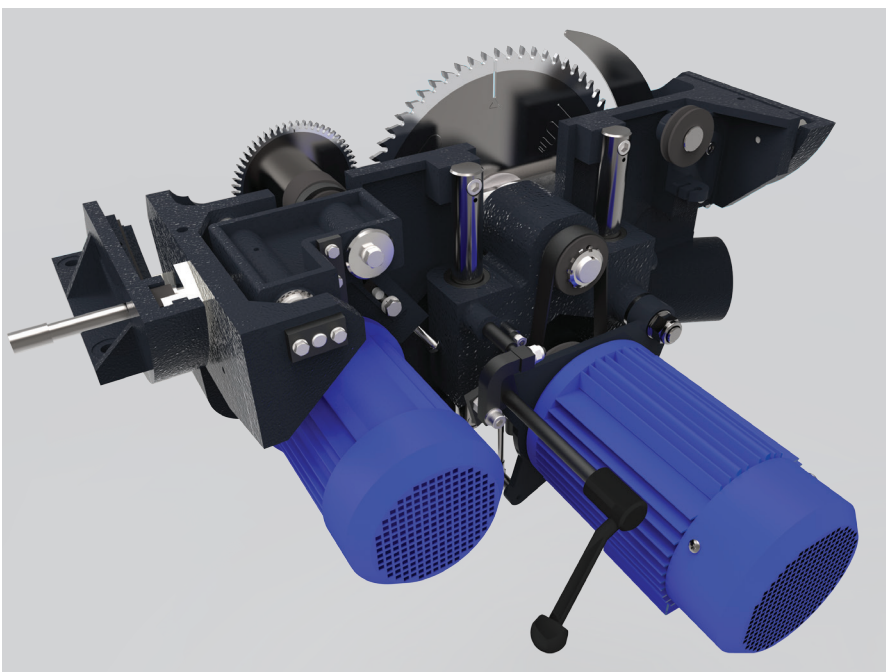
Machine ergonomics is the result of a successful cooperation between REMA constructors and experienced carpenters.





The proven design of the crosscut fence and the strong construction of the cross cut table allows to work with even the most demanding material.

Cutting unit set on cast iron arches with 6 kW main motor engine and 0,75 kW scoring unit engine.



Cast iron cradle with adjustable height and sawing angle and the guiding system on poles.

Saw blade tilting	0÷46°
Main motor power	6 kW
Main spindle rotation speed	4000 rpm
Main spindle diameter	Ø30 mm
Main saw blade diameter	Ø300÷Ø350 mm
optional	Ø400 mm
Scoring unit saw diameter	Ø125
Scoring unit motor power	0,75 kW
Scoring unit spindle rotation speed	8500 rpm
Scoring unit spindle diameter	Ø20 mm
Rip fence max width	1260 mm
Cross cut fence stoppers width	85÷2500 mm

Sawing height depending on saw blade and angle:

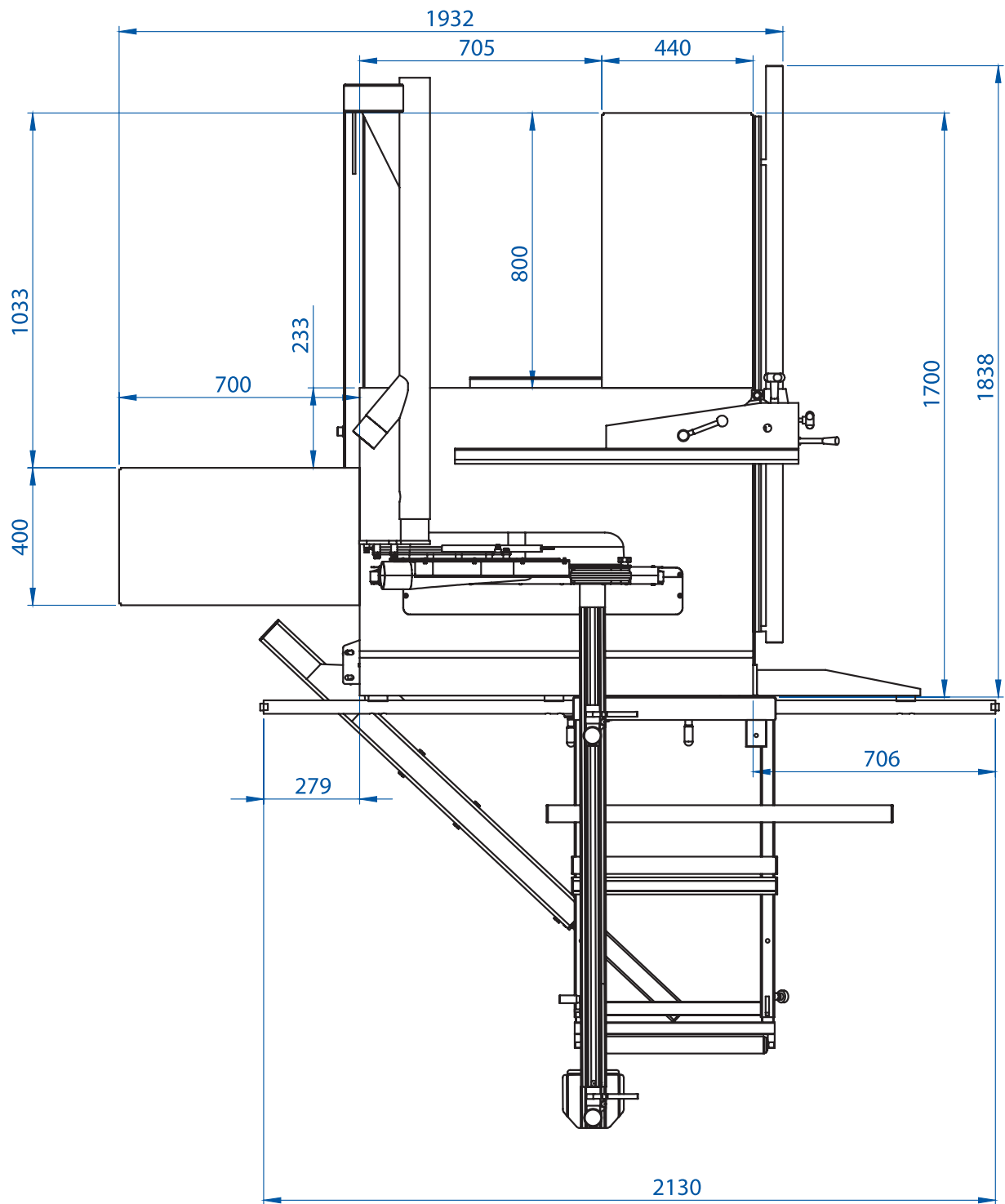
	0°	45°
→ Ø 300	0÷80 mm	0÷55 mm
→ Ø 350	0÷105 mm	0÷70 mm
→ Ø 400	38÷130 mm	27÷90 mm

Sawing length:

	Cross cut fence up front	Cross cut fence at the back
→ guide roller set up front	970 mm	660 mm
→ guide roller set at the back	470 mm	1150 mm

Extraction outlet diameter – bottom	Ø125mm
Extraction outlet diameter	Ø80mm
Air requested (bottom extraction system)	1000m³/h
Air requested (top extraction system)	250m³/h
Suction air speed	22m/s dry sawdust, 28m/s wet sawdust
Weight	600kg

*Machine specifications are subject to change. In case of doubt, the parameters indicated in the individual offer are binding.





REMA S.A.

ul. Bolesława Chrobrego 5

11-440 Reszel

tel. (89) 755 00 05

sale@rema-sa.pl

rema-sa.pl